



Schools for Every Child

Health & Safety Policy

We are an education Trust that is committed to running dynamic, ever-improving schools. We work to make sure that every child feels they belong in their school where they feel safe and inspired by learning. For us, learning is an adventure. It is a privilege and a responsibility for all who work with us to ensure that the journey through school is exciting, challenging, caring and enriching, and that every child experiences joy, wonder, calm and success.

Approval Level	Board
Author	Leigh Sellwood
Approval Date	April 2025
Trust/Template/School level	Trust
Review cycle	Annual

“The purpose of governance is to provide confident, strategic leadership and to create robust accountability, oversight and assurance for educational and financial performance”. (DfE)

Approval History

Committee Approval	Status	Next Review Date
F&R 29th Jan 25 Ratified- Board meeting 3rd March 25	Review in progress Submitted for Ratification Live Policy	April 2026

Contents

1 Policy Statement	3
2 Responsibilities	4
3. Competent Health and Safety Advice	10
4. Occupational Health	10
5. Educational Visits	11
6 Catering	11
7 Health Protection	11
8 Property Consultants	12
9 Health and Safety Arrangements	12
10 Health and Safety Competence and Capability	14
11 Communication	15
12 Health and Safety Consultation	15
13 Health and Safety Monitoring and Auditing	15
14 Health and Safety Performance Reporting and Review	16
15 Consequences of Non Compliance with the Schools Health and Safety Policies and Standards	16
16 Review and Revision	16
Appendix 1: Health and Safety Local Arrangements Notice	17
Appendix 2: Getting help on health and safety	18
Appendix 3: How to raise a health & safety concern	19
Appendix 4: Notify HQ form	20
Appendix 5: Incident Form	20

1 Health and Safety Policy Statement

The responsibility for overseeing Health and Safety within our Trust is delegated by the Trustees to the Local School Boards (LSBs). Trustees empower LSBs to hold Headteachers accountable for ensuring compliance with Health and Safety policies and legislation. LSBs are responsible for ensuring that Health and Safety policies are implemented, monitored, and followed within their schools.

The Trust HQ team supports schools by facilitating annual health and safety audits and reports, which LSBs and Headteachers are required to action. Additionally, termly Health and Safety walks are conducted with the Estates Lead to support ongoing compliance and improvements.

This support does not remove the fundamental responsibility of Headteachers and site managers to oversee Health and Safety within their schools and to carry out regular monitoring. Schools must notify Trust HQ of all Health and Safety incidents, including near misses and any incidents where a child or adult requires medical support from a third party—such as calling 111, visiting a GP, or attending A&E. This reporting requirement applies even if the incident does not meet the threshold for RIDDOR reporting.

Incident Reporting

Completion of an Incident Report – Schools must complete a standard Incident Report Form within five school days (see Appendix 5) for all incidents where medical attention from an external provider has been sought - this will include an executive summary of the incident, witness statement summaries, actions taken to mitigate future incidents and any external reporting that has happened as a result.

1. Headteacher Review – The headteacher must add their comments to the report.
2. LSB H&S Review – The designated LSB Health & Safety representative must review the report and provide observations.
3. Competent Person Review – The Trust’s competent person must review and sign off the report who will then send a copy to our Risk administrator.
4. Report Distribution – Once signed by all three parties (Headteacher, LSB H&S representative, and Scott), copies of the report must be:
 - Keep a copy at the school
 - Keep a copy at Trust HQ
 - Send one copy to the CEO & CFO
 - Send one copy to the designated Health & Safety Trustee

This process ensures that Trustees can monitor incidents, identify patterns, and drive continuous health and safety management improvements.

Health and safety management remains the direct responsibility of Headteachers, who report key information to the CEO and CFO. This information is then shared with Trustees to ensure strategic oversight and accountability across the Trust.

2 Responsibilities

2.1 Board of Trustees

The Board of Trustees, as the employer, is responsible for Health and Safety and therefore ensuring compliance with relevant legislation. This includes legal duties as controllers of the premises.

Duties include:

- Taking reasonable steps to make sure that the school buildings, grounds, equipment and materials are safe and do not put the health, safety and welfare of persons at risk, whilst they are on the premises.
- Ensuring that appropriate arrangements are in place to comply with statutory requirements.
- Ensure that statutory requirements are taken into account in determining the allocation of resources.
- Ensuring that the policies and procedures for recruitment, induction, staff development, performance management and capability used by the School include health and safety competence and capability.
- Ensuring health and safety is part of the performance management of the Headteacher.
- Ensuring that the Headteacher has an appropriate workload, in support of a reasonable work/life balance, having regard to his/her health and welfare.
- Having regard to their own competence and capability before offering advice or undertaking work that may affect the health and safety of School activities.
- Ensuring that anyone appointed to undertake construction and maintenance work on the school premises is competent to do so and that any construction work is carried out in accordance with the Construction, Design and Management (CDM) Regulations.
- Ensuring that a property consultant is used to assist with the appointment of a competent CDM co-ordinator before any notifiable construction or demolition work is undertaken on the site. (NB: This is to ensure construction work is carried out in accordance with the requirements of the Construction, Design and Management (CDM) Regulations. Notifiable projects are those likely to last more than 30 working days **and** have more than 20 workers working at the same time at any point on the project **or** exceed 500 person days).
- Taking an active part in monitoring health and safety standards in the school, by requiring Headteachers to provide regular reports on health and safety performance to LSB members. Such reports should provide information on action taken on the following:
 - School health and safety inspections, monitoring checks and incident investigations.
 - Health and safety investigations and inspections carried out by enforcing bodies (e.g. HSE, Fire and Rescue Service, Environmental Health); other serious incidents investigated by the Headteacher or other member of staff.
 - Any survey carried out by the school, which provides data that relates to employee health, safety and wellbeing (e.g. Outcomes from Education Support Partnership Programme, if used).

- Appointing a Governor who understands the educational visits system and who will agree the higher risk visits (e.g. overseas, adventurous or residential).

2.2 Headteacher

Headteachers' responsibilities include:

- Ensuring there are appropriate arrangements for implementing the school's Health & Safety Policy.
- Ensuring that the Policy and arrangements are effectively communicated to all appropriate stakeholders.
- Ensuring systems are in place for consultation with all employees and that Trade Union appointed safety representatives can carry out their functions.
- Demonstrating health and safety leadership by ensuring health and safety is given equal importance to service delivery.
- Ensuring there are appropriate arrangements in place for co-operation and coordination with other users of the School site and that, where necessary, joint Health and safety arrangements are recorded and agreed.
- Ensuring appropriate arrangements are in place for communication of health and safety to all employees, agency workers, contractors, visitors, volunteers and pupils.
- Ensuring that all employees are competent and have the capability to carry out their role/function.
- Ensuring records of health and safety training are maintained by the School.
- Ensuring that health and safety standards accessed via the Schools Infolink are made available to relevant employees.
- Ensuring the School's health and safety standards (available via the Schools Infolink) are implemented.
- Ensuring there are arrangements in place for managing risks arising from the School's activities or premises, which are not covered by standards available on the Schools Infolink.
- Ensuring that risk assessments relating to hazards to which directly managed employees are exposed are carried out, recorded and control measures implemented.
- Ensuring that managers, who they directly line manage, carry out their health and safety responsibilities.
- Ensuring systems are in place for monitoring and reviewing health and safety in the School and any actions arising from this are implemented.
- Ensuring there is system in place for reporting and investigating accidents / incidents and that all employees are aware of it.
- Regularly (at least annually) reporting School health and safety performance to the LSB.
- Ensuring there are arrangements in place for the management of the premises on a day-to-day basis.
- Ensuring premises management tasks are delegated to a suitably competent site manager or co-ordinator, or a competent property consultant.
- Ensuring that if they are not the school's named Educational Visits Coordinator, they appoint a member of the School's Senior Management Team to undertake

the role (and ensure they are given training and time to undertake the role).

2.3 School Health and Safety Coordinator

Headteachers can, if appropriate, appoint a senior member of staff to coordinate and monitor the implementation of the health and safety policy. The safety coordinator must be given sufficient time and resources to carry out their role. Their identity and role should be clearly communicated to all School employees.

Below are the duties which may be delegated to another member of staff. However, the responsibility remains with the Headteacher.

The site manager has been appointed as the School's Health & Safety Co-ordinator and will:

- Establish arrangements for the effective coordination of health and safety throughout the school.
- Support the Headteacher in co-ordinating the development, review and revision of the school's health and safety standards.
- Set up arrangements for consulting with employees on health and safety (e.g. through health & safety committee meetings or team meetings).
- Set up arrangements for the effective communication of health & safety information relevant to the school.
- Ensure health and safety concerns raised by employees are brought to the attention of the appropriate senior manager.
- Ensure that the Headteacher / School's senior management team is kept informed of health and safety issues by including them on the agenda of management group meetings.
- Co-ordinate the identification of health and safety training and development needs to meet the requirements of the School's Policies and Standards.
- Ensure records of health and safety training and development undertaken by employees are kept in the school.
- Support the establishment of adequate arrangements for:
 - First aid.
 - Fire and emergency evacuation.
 - Reporting of health and safety incidents, hazards and concerns.
- Oversee the management of premises related health and safety risks to employees and other premises users or visitors.
- Co-ordinate and ensure compliance with premises related standards and assessments.
- Coordinate arrangements for monitoring of health and safety standards within the school.

2.4 All managers and supervisors

All employees with management and supervisory responsibilities are responsible for the implementation of the Health & Safety Policy in their area of control. As a general rule, the direct responsibility of managers for health and safety is determined by the extent to which they have authority to take action. That is, if they have the authority to make a general decision about some aspects of the work, they are responsible for the

health and safety implications of that decision.

Their responsibilities include:

- Ensuring the Health & Safety Policy is implemented in their area of responsibility.
- Ensuring managers under their control carry out their health and safety responsibilities.
- Identifying opportunities to improve the health & safety within the School, and promoting risk awareness and the development of safe behaviours.
- Ensuring all relevant health and safety information is communicated effectively to the correct employees and take account of their views.
- Ensuring the health and safety competence and capability of employees under their control (identifying any training needs as part of performance management).
- Ensuring relevant health and safety standards and risk assessments are implemented in their area of control.
- Ensuring, in their area of control, risk assessments are carried out, recorded and the control measures implemented.
- Undertaking risk assessments relating to hazards to which directly managed staff are exposed (this will include stress risk assessments).
- Reviewing the effectiveness of health and safety standards at controlling risks and feeding back areas of concern to their line manager, Headteacher or Governing Body.
- Ensuring health and safety issues identified via risk assessments or monitoring activities that cannot be addressed are raised with their line manager.
- Ensuring health and safety monitoring is undertaken in their area of control, in accordance with the school's requirements.

2.5 All employees

All employees are responsible for:

- Looking after their own safety, and the safety of others, affected by their work.
- Co-operating with the School, by following safe working practices and carrying out their health and safety responsibilities as detailed in the school's policies, risk assessments and health and safety standards.
- Reporting to their line manager any hazards they identify and any inadequacies in health and safety procedures.
- Taking part in any health and safety training and development, identified as necessary by the Headteacher or their Line Manager.
- Using work equipment provided correctly, in accordance with instructions or training.
- Ensuring that if they organise projects or activities involving pupils or other non employees, risks are assessed as part of the planning stage and control measures implemented. Reporting health and safety incidents, in accordance with the School's health and safety Incident Reporting Procedure.

And, with respect to Safety Education:

- All employees are responsible for contributing to the safety education of pupils through the formal and informal curriculum.
- All teachers and support staff are responsible for the effective supervision and safety of pupils under their care. This includes ensuring that pupils follow health and safety instructions.

2.6 School Visits

The school undertakes educational visits and has appointed a senior member of staff as the Educational Visits Coordinator (EVC) who has:

- sufficient and relevant experience in running visits.
- the competence to train and monitor others; and
- the authority to agree or not to agree to visits.

Where the school has any part in organising events, trips or activities beyond the School gate it recognises that it has a responsibility. The school's pastoral responsibilities cannot be delegated to other external providers.

The school has developed a policy on visits beyond the School gate which includes:

- Emergency, accident and critical incidents planning.
- Supervision and staffing including competence, safeguarding and training. All those involved in any supervision for the school are subject to this policy.
- The visits system, including the school approach to planning, informing, signing off and supporting visits.

Educational Visits Professional Advice:

- The school has access to specialist advice on Educational Visits from the ECC Educational Visits Team (contact details in Appendix 2).
- This includes access to advice via phone and email, access to the Educational Visits Website (EVOLVE) and access to the online risk assessment forms.

The school EVC will:

- Ensure they have attended EVC Training (and refresher training at least every 3 years).
- Ensure that establishment managers, visit leaders, assisting staff, voluntary helpers and all staff involved in Learning Outside the Classroom (LOtC), off-site activities and visits have had access to training / instruction at an appropriate level to ensure that the school's guidance and establishment procedures are properly understood and followed. This will involve training on visit planning, group management, use of external providers, pre-visits risk management and safeguarding.
- Organise the training of Visit Leaders and Assistant Leaders (including voluntary helpers)
- Ensure that Leaders and Assistant Leaders are competent to carry out the tasks they are assigned
- Ensure that activities and visits are led by competent and confident leaders. The Visit Leader needs to be both accountable and competent. Being accountable implies being an employee and thus part of a chain of specified roles and responsibilities. Being competent requires that the leader can demonstrate the ability to operate to current standards of recognised good practice
- Manage training of all those connected with visits

- Understand where visits can be signed off by the EVC on “everyday risk” and when further advice is necessary
- Ensure they understand how LOtC, off-site activities and visits can support a wide range of outcomes for children and young people, and raise achievement
- Ensure that LOtC, off-site activities and visits meet guidance requirements
- Ensure that DBS checks are in place as required.
- Ensure that the establishment policy provides sufficient guidance to Visit Leaders about information for parents and parental consent
- Support the headteacher and governors as required with information, visit approvals and other decisions
- Check that there is a 24/7 emergency contact(s) with the base for each and every visit and that emergency arrangements are in place;
- Ensure they keep up to date with EVC update processes through EVOLVE and EVC Revalidation courses as recommended or required.
- Ensure that there is an establishment procedure for recording “incidents / accidents / near misses”, including any resulting learning points and action
- Ensure that where the accompanying staff includes someone with a close relationship to a group member, there are adequate safeguards to ensure that this will not compromise group management
- Ensure that medical and first aid issues are addressed
- Ensure that emergency arrangements are in place including emergency contact access to all relevant records, including medical and next of kin information for all members of the party, including staff
- Undertake monitoring of Visit Leader planning and sample monitoring of visits
- Ensure that individual activities and visits are reviewed and evaluated and that this process includes reporting of accidents and incidents, (including under the Reporting Injuries, Diseases and Dangerous Occurrences Regulations [RIDDOR] where necessary).
- Ensure that policies and procedures are reviewed on a regular basis. A review should follow any serious incident or systems failure. Risk management documentation must be updated if necessary.
- Submit electronically within the timeframes set out by the Educational Visits Team, residential, overseas and adventurous visits to the County Educational Visits Adviser for comment providing sufficient information on the risk management of the visit. Understand when it is necessary to seek clearance for some visits from the Governing Body. This is likely to be when a visit is first proposed, before a financial commitment is made and for specific types of visits e.g. overseas expeditions.
- Keep records of individual visit plans (a legal document), as well as reference material for the school, in addition to keeping records e.g. reports of health and safety incidents- (the school has access to and uses EVOLVE to keep records).

2.7 Contractors and Visitors

- Visitors to the School, including contractors, clients, service providers and members of the public must comply with the school’s health and safety procedures and requirements.

- All contractors and visitors must be made aware of the site-specific arrangements and emergency procedures and are the responsibility of the member of staff being visited.

3. Competent Health and Safety Advice

The school purchases the Essex County Council Health and Safety Service as providers of competent health and safety advice, to assist the school with discharging its responsibilities.

The ECC Health & Safety Service includes:

- Access to standards, generic risk assessments and guidance through the health & safety pages of the schools Infolink. (These standards are based on legislation, industry standards and best practice and produced by competent health & safety advisers).
- Access to a telephone and e-mail support desk for queries.
- Further support, such as audits and site visits charged at an hourly rate.

4. Occupational Health

4.1 Occupational Health Advice

The school has access to / contracted with Essex OH Team in relation to competent occupational health advice.

The service includes:

- Pre-employment health screening and advice on reasonable adjustments to enable employment of applicants with disabilities and health conditions
- Support in the prevention of work-related absence through advising on health related risk assessment.
- Statutory health surveillance (for exposure to noise, vibration, hazardous dusts and substances)
- Advice at the early stages of occupational ill health, thereby reducing the risk of an absence becoming long term or recurring.
- Support where employees are sick, examination and advice on whether return to work is appropriate and, if so, what adjustments may be needed.
- Advice for employees and possible recommendation for further specialist advice/treatment.
- A second opinion on a GP report and liaising with the GP on any differences of opinion
- Assessing the employee's eligibility for ill health retirement or disability benefits.

4.2 Counselling

The school has access to the Council's Occupational Health Service and as part of this has ensured that staff also have access to the counselling service.

Counselling Service: Telephone 0333 013 3267 / Email counselling@essex.gov.uk

Further information on Schools Infolink – Staff Support / Occupational Health

Healthshield 24/7 Counselling & Support line for cash plan members:
<https://members.healthshield.co.uk/MemberMP/LoginMember.aspx>

4.3 Wellbeing

The school undertake occupational stress risk assessments through use of the guidance and forms available on the Occupational Stress pages of the Schools Infolink. (Health and Safety Area)

5. Educational Visits

The school has bought into Essex County Council Educational Visits Service. This gives the School professional advice on health and safety standards for all educational visits, including Adventurous, Residential and Overseas visits involving children and young people.

ECC Educational Visits Service has adopted the OEAP National Guidance for the Management of outdoor learning, off-site visits and Learning Outside the Classroom. See www.oeapng.info – documents 3.4g Headteacher / Managers and 3.3b Checklist.

As part of the subscription to the Educational Visits Support Service, the School has access to the **EVOLVE** online submission system and associated resources.

Educational Visits Support Service: www.essexvisits.org.uk / Tel: 01245 221022 / E-mail: educational.visits@eesforSchools.org

6. Catering

The school manages and delivers its own in-house catering service and therefore has access to competent food safety advice.

The school's competent food safety adviser is Essex Catering (e.g. ECC School meals support and advice service or independent catering consultant).

School Meals Support Service: Infolink / 01245 356218 / School.meals@essex.gov.uk

7. Health Protection

The Essex Health Protection Team (HPT), which is part of Public Health England (PHE), provides advice on communicable diseases and infection control in Schools. In the first instance, Schools should refer to Essex HPT's guidance – 'Communicable Diseases in Schools / Nurseries and Centres for under 5's' or PHE general guidance 'Infection control in Schools and other childcare settings'. (These documents are available on the health & safety pages of the Schools Infolink).

Further assistance may be available from the school nurse at a local NHS clinic or through contact with HPT directly.

Essex Health Protection Team: essexhpt@phe.gov.uk / 0345 155 0069

8. Property Consultants

Where major building or maintenance / improvement works are being carried out, the School will appoint a property consultant. Major work is defined as notifiable under the Construction Design and Management Regulations. Notifiable projects are those likely to last more than 30 working days **and** have more than 20 workers working at the same time at any point on the project **or** exceed 500 person days.

The school manages its property and premises in-house. The LSB's and Headteacher have overall responsibility but have delegated general premises management to the Site Manager who has received appropriate training. The school also has access to standards on general property issues and compliance through the Health & Safety pages and the infrastructure delivery pages on the Schools Infolink.

Where major building or maintenance / improvement works are being carried out, the School appoints a property consultant.

9. Health and Safety Arrangements

9.1 General Arrangements

The detailed arrangements for implementing this Policy are contained within health and safety standards, generic risk assessments and guidance on the health and safety pages of the Schools Infolink. The standards are on a secure part of the Infolink which the school has access to as it buys into the ECC Corporate Health & Safety Service.

School staff who are not able to access the health and safety pages on the Infolink with their login should contact the School's Health & Safety coordinator to obtain any guidance they need or to arrange for access to the health and safety pages.

A summary of arrangements for managing health and safety is given below:

9.2 Local Arrangements within the School

Local arrangements have been implemented in the school covering:

- Employee health and safety competence and capability.
- Failure to comply with health and safety requirements through performance management and disciplinary processes.
- Fire and emergency evacuation (including fire risk assessment).
- First aid.
- Communication and consultation of health and safety.
- Reporting of health and safety incidents, hazards and concerns.
- Requirements to carry out risk assessments including for Stress, VDU's, Violence, Lone working, Manual handling, educational visits, One-off events and projects, Curriculum activities and any other areas / activities where it has been identified that there are significant risks.
- Managing the risks to Young People on Work Experience Placements and risks to Pregnant Workers.
- Control of asbestos (including asbestos management plan) and legionella.
- Working at height.
- Statutory inspection and maintenance of work equipment, plant and service.
- Control of (health and safety vetting and monitoring) contractors.
- Monitoring compliance with and reviewing effectiveness of health and safety assessments and procedures.

9.3 Health and Safety Standards (Status)

How we do things safely is detailed in the health and safety standards, policies, generic risk assessments and guidance on the Health and Safety pages of the Schools Infolink. It is important that managers and employees follow these, as they are the way the school ensures it is meeting its legal obligations for health and safety. Your contract of employment (Conditions of Service) requires that you cooperate with the school by complying with its standards for health and safety. Failure to do so can result in disciplinary action. It may also expose the school, or individuals within the School to the risk of prosecution.

These standards can be accessed by request.

9.4 Health and Safety Risk Assessments

Risk Assessment is a legal requirement. The ECC health and safety standards, generic risk assessments and guidance were prepared following an assessment of the likely risks in the area to which they relate and in general form the basis of most routine risk assessments. However, as generic assessments, they have limitations and it is the responsibility of the Headteacher and all managers to ensure assessments are modified and extended to take account of local circumstances, or separate risk assessments produced for activities where one does not exist if there is a significant risk.

For all managers, this includes:

- Ensuring controls detailed in standards and generic risk assessments are implemented in their area of control; Ensuring specific risk assessments are undertaken (e.g.: VDU, Stress, Manual Handling, curriculum activities) in their area of control.
- Undertaking risk assessments relating to hazards to which directly managed staff are exposed (this will include stress risk assessments).
- Ensuring risk assessments are carried out as part of the planning of new projects or initiatives that may have health and safety implications.

10. Health and Safety Competence and Capability

Competence is the ability to do the job required to the necessary standard. It is not just training, but also experience of applying the skills and knowledge, which needs to be gained under adequate supervision.

The school considers health and safety competence requirements as an integral part of:

- Recruitment and Selection

- Employees changing role
- Induction
- Temporary employees, agency workers and volunteers
- Performance management
- Procedures when employees fail to perform on health and safety.

Performance Management: The school follows a set performance management review system that is focused on improving teacher practice and pupil achievement. Health and safety is considered as part of the performance management process and where appropriate, health and safety objectives are included.

In respect of the Headteacher, account is taken of the results of health and safety monitoring, Ofsted reports and self-evaluation forms (SEFs). Where these show areas that need development, health and safety is included as a specific objective under Leadership.

Reference should be made to Headteacher, manager and employee responsibilities in this policy document.

For non-academic staff health & safety is considered as part of the performance management process.

Training (legal requirement): There is a legal requirement to take account of an employee's health and safety capabilities when giving them tasks. More specifically there is a requirement to provide employees with adequate health and safety training on recruitment and on being exposed to new risks (for instance due to a change of job role). The school ensures that employees are given access to training and development appropriate to their role and risks they are exposed to.

Training and development can be delivered in a variety of ways. In some cases, formal training will be needed. In other cases, it can be achieved through coaching by another member of staff or reading relevant health and safety standards.

The school keeps a record of Health & Safety training undertaken by employees.

EES for Schools: EEStraining@EESforSchools.org / 0333 013 9834

11. Communication

It is recognised that good communication systems are essential to ensure that everyone knows:

- about the health and safety arrangements within the Schools.
- about the risks associated with their work.
- what they need to do to protect themselves and others from harm; and
- how they can contribute to a safe School, by raising health and safety concerns.

All staff have full access to all policies and are alerted to updates or changes.

12. Health and Safety Consultation

Employees need to be involved in health and safety decisions that affect them and the risk assessment process. Consultation involves not only giving information to employees, but also listening to them and taking account of what employees say before making any health and safety decisions. The law requires that employees must be consulted before implementing changes that may affect their health and safety and with regard to risk assessments that cover their work activities.

13. Health and Safety Monitoring and Auditing

The school has established the following systems to discharge its responsibility for health and safety monitoring in the establishment.

- **Audits:** The School will ensure that a health & safety audit of the establishment is carried out at regular intervals.

- **Internal Monitoring:** The School ensures that the online health and safety electronic internal monitoring checklists available annually through the health & safety pages of the schools infolink are completed. The submission of these automatically generates actions plans which are reported to the LSB/Trustee.

- **Health and Safety Incident Investigation:** The School has an internal system for reporting incidents. Any incident numbers and details are reviewed by the Headteacher. A summary report is also presented to the LSB at least termly. Serious incidents are reviewed by a senior member of staff and the findings reported to the LSB. The school also uses the online reporting system available through the Health & Safety pages of the Schools Infolink.

- **Other Monitoring:** There are systems in place within the school which ensure that the following monitoring is also carried out:

- o Termly inspections of the premises (all curriculum / work areas and general areas).

- o Monitoring of contractor operations under the school's control.

- o Routine checks on equipment and electrical, gas, mechanical and other services.

- o Hazard reporting documentation for immediate recording.

14. Health and Safety Performance Reporting and Review

The LSB/ Headteacher continually review the health and safety performance of the School-

- Health and safety investigations and inspections carried out by enforcing bodies (e.g. HSE, Fire and Rescue Service, Environmental Health).

- Any surveys carried out by the school, which provide data that relates to

employee health, safety and wellbeing.

15. Consequences of Non-Compliance with the Schools Health and Safety Policies and Standards

It is a requirement for all employees to fulfil their responsibilities as outlined in this policy. Where there is a failure to comply with the Policy, whether observed in routine activities or through established health & safety monitoring systems, an appropriate response is required to hold managers and employees to account and remedy the failure. A number of options are available depending on the severity of the circumstances:

- As part of the normal line management process
- Through performance reviews
- For serious breaches, through disciplinary action. If sufficiently serious, this could include dismissal for gross misconduct.

The School's HR policies give full details on disciplinary and misconduct procedures.

16. Review and Revision

This Policy is reviewed annually and revised as necessary in the light of changes in circumstances and/or legislative requirements.

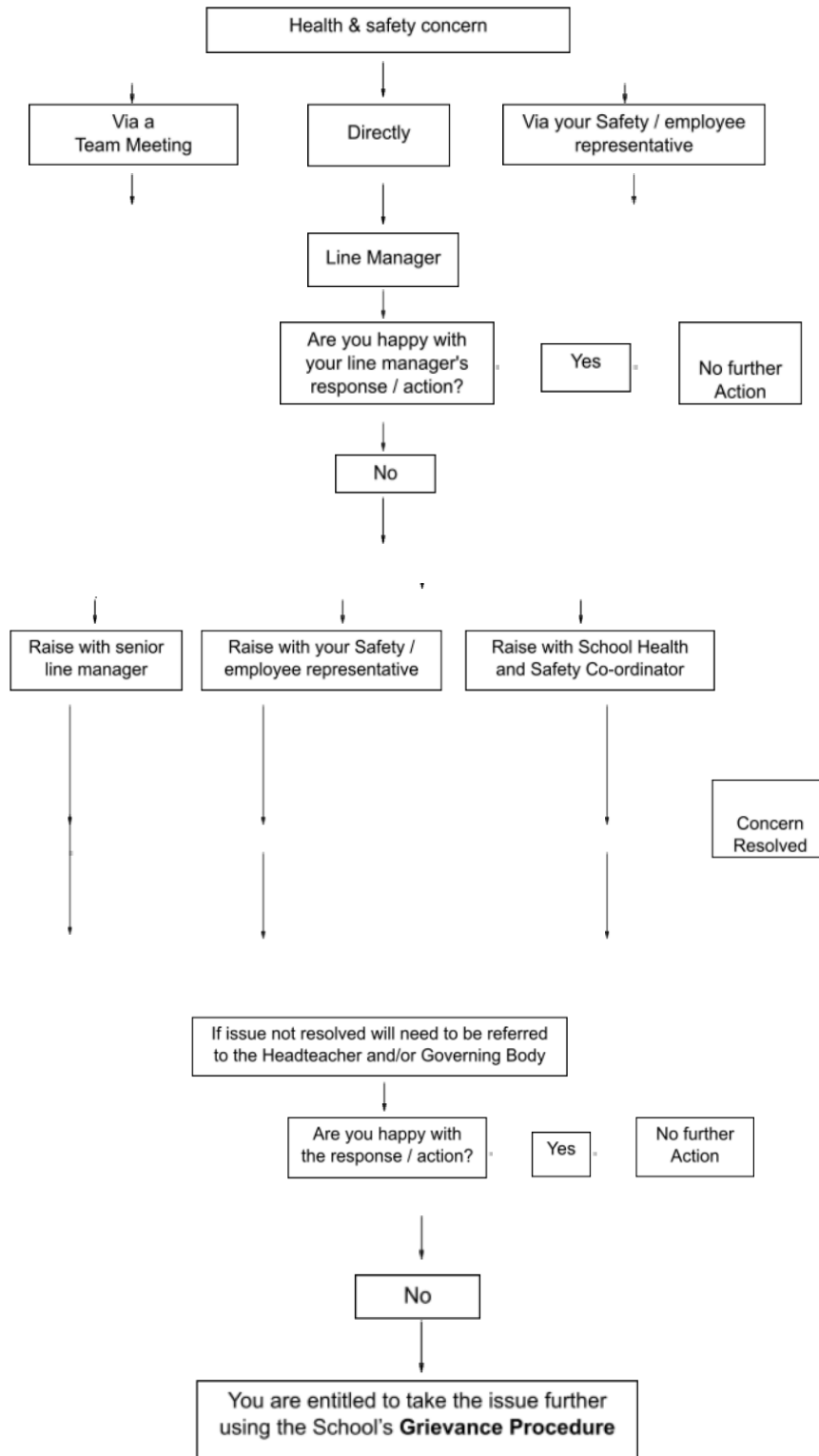
Appendix 1: Health and Safety Local Arrangements Notice

School:	
Headteacher:	
Health & Safety Governor:	
School Health and Safety Coordinator:	
Educational visits coordinator:	
TU Health and Safety Representative / Employee Representative:	
Report health and safety accidents / incidents to:	
Report hazards to:	
Person(s) responsible for undertaking H&S inspections:	
Person responsible for coordinating fire evacuation arrangements:	
Fire marshals:	
Fire assembly point(s):	
Day and time of weekly fire alarm tests	
First aiders / appointed persons:	
Where to find: Location:	Where to find: Location:
Accident / Incident report forms	
Hazard book	
Health and Safety Standards and Information relevant to School / curriculum area	The school subscribes to ECC Corporate H&S. Standards and guidance which are on the health & safety pages of the Schools Infolink.
Members of staff who have health and safety access on the Schools Infolink.	

Appendix 2: Getting help on health and safety

ECC Contacts	Name(s)	Contact No. / email
ECC Corporate Health & Safety Team	H&S Support Desk	Tel: 0333 013 9818 hs@essex.gov.uk
School Meals	School Meals Helpline:	Tel: 01245 356218 E-mail: School.meals@essex.gov.uk
Asbestos / legionella / contractor management advice	Refer to property handbook	
County Educational Visits Adviser	Educational Visits Team	Tel: 01245 221022 educational.visits@eesforSchools.org
ECC Counselling Service (Confidential service)	Occupational Health Centre	Tel: 0333 013 3267 E-mail: counselling@essex.gov.uk
EES for School	Training	enquiries@EESforSchools.org
Critical Incidents (support and guidance for dealing with critical incident)	Schools Communications	Tel: 01245 434745 E-mail: Schools.communication@essex.gov.uk
Other contacts		
School's Estate Lead + H+S Officer	Scott O'Donohoe – 07707 908600 – estatelead@seamat.org	
School's food safety advisor	Essex	
Occupational health advice	Essex	
School nurse	Castle Point	
Essex Health Protection Team (Infection control advice):	0345 155 0069 essexhpt@phe.gov.uk	

Appendix 3: How to raise a health & safety concern



Appendix 4

Notify HQ Form

The Notify HQ form is an online form which is [linked here](#).

Upon completion of the form an automated email is sent to the CEO, CFOO and Risk & projects officer. The details from the form are logged on an excel spreadsheet to ensure that if follow up action is required then it is assigned to the correct person and followed through until completion.

Appendix 5

Incident Report (must be completed whenever a child or adult requires any form of medical support from a third party—whether that be calling 111, seeing a GP, or going to A&E.

1. **Completion of the Incident Report** – The school must complete the following **Incident Report Form**
2. **Headteacher Review** – The headteacher must add their comments to the report.
3. **LSB H&S Representative Review** – The designated LSB Health & Safety representative must review the report and provide their observations.
4. **Competent Person Review** – Scott, as the Trust's competent person, must review and sign off the report.
5. **Report Distribution**



Schools for Every Child

INCIDENT REPORT

To be completed whenever a child or adult requires any form of medical support from a third party—whether that be calling 111, seeing a GP, or going to A&E.

Incident reported by:

Date of Incident:

Time of Incident:

Names of staff / pupils concerned: (incl. Year Group)

Place of Incident:

Description of Incident

Other Information: (previous history log reference nos., background information)

Action taken and by whom:

Continue on another sheet if necessary

Signed/Initialled by Staff Reporting:

MANAGEMENT RESPONSE

Headteacher Review & Comments

Signed by Headteacher:

LSB H&S Representative Review & Observations

Signed by LSB H&S Representative:

H&S Competent Person Review & Observations

Signed by H&S Competent Person:

Once this form has been completed please return to the Headteacher.

The Headteacher should circulate the completed form to:

ceo@schoolsforeverychild.org

cfo@schoolsforeverychild.org

projects@schoolsforeverychild.org