



# North Crescent Primary School

*Guiding Explorers of the Future*

We are delighted to share that North Crescent Primary School has been ranked the number one primary school in Wickford by School Guide, based on official performance data including exam results and Ofsted inspections. This achievement reflects the dedication and hard work of our entire school community, and we thank you for your continued support.

We will be celebrating this success in school with the children and sharing photos on our social media. While we are proud of this recognition, we remain committed to ongoing improvement and welcome your feedback as always.

## Diary Dates

**Thursday 7th May -**  
Year 2 Sharing Assembly - 2:45pm

**W/C Monday 11th May -**  
KS2 SATs week

**Monday 18th May -**  
Coffee Morning for new starter parents - 9:30am

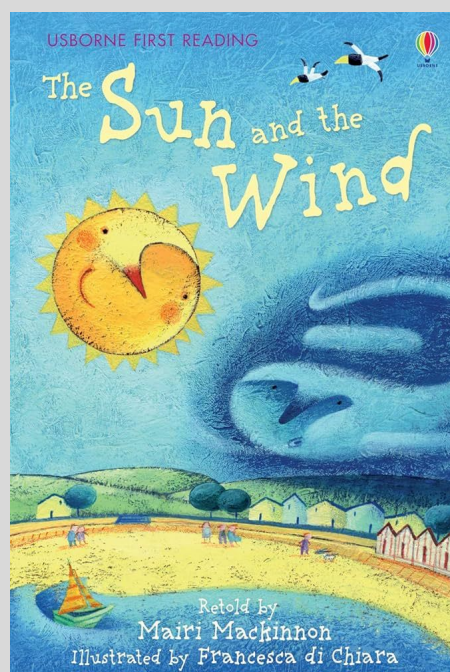
**Thursday 21st May -**  
Year 1 Sharing assembly - 2:45pm

**Thursday 21st May -**  
Census day

**Friday 22nd May -**  
NCP 50th birthday celebration

## Book of the Week

This week we are celebrating the story *The Sun and the Wind*. This classic story encourages children to think about kindness, persuasion and different ways to solve a problem.



Huge congratulations to the following children who have been chosen as the Lead Learners.

Explorers	Ethan	Pathfinders 2	Theo
Pathfinders 1	Steven	Adventurers 4	Whole class
Adventurers 3	Sophia	Navigators 6	Miami
Navigators 5	Demarni		

Each week we celebrate the class that have shown respect for their classroom. The children really love our gold, diamante dustpan and brush award! Why don't you ask them about it?

### Do you need support for your family?

At times, it can be overwhelming. A Team Around the Family (TAF) meeting is an opportunity to bring everyone together for one conversation. You get to decide who comes and where you would like to have the meeting. We will work together to come up with a family plan. If you feel this is something you would like to explore further then please feel free to reach out to me.

Seeking support for your family is a sign of strength.

Mrs Quick is the TAF Coordinator.

Instagram: @northcrescentprimary  
FB: North Crescent Primary School  
Twitter/X: <https://x.com/NorthCrescentP>



# Maggie - Therapy Dog

Maggie, a registered therapy dog, and her lovely owner Doris, will soon be coming to join us here at North Crescent Primary School!

Maggie is a 6-year-old greyhound with a calm, affectionate nature and a true "gentle giant" personality. She is wonderfully relaxed around people and enjoys nothing more than being stroked, making her a perfect companion for a primary school environment.

Maggie is very well-mannered and she doesn't jump up or lick, although she does have a curious nose and enjoys a gentle sniff, which may feel a little like a tickle! She is especially food-motivated (treats are definitely the way to her heart) and loves settling down on soft cushions for a peaceful nap.

While Maggie isn't trained to perform tricks, her strength lies in her calm presence and comforting nature. She brings a soothing energy that can help children feel relaxed, supported, and happy.

One small note: Maggie does have a fondness for soft, plush toys, so these are best kept out of reach during her visits.

Maggie is going to make a wonderful addition to your school community, offering companionship, calmness, and plenty of quiet cuddles.



# School Menu w/c 04/05/26

## Menu

Week 2, 20/4, 4/5, 18/5, 15/6, 29/6, 20/7



	Monday	Tuesday	Wednesday	Thursday	Friday
<b>Option 1</b>	Chow Mein	Chicken Burger	Homemade Sausage Roll	Chicken Curry	Fish Fingers
<b>Option 2</b>	Chow Mein	Southern Fried Qorn Burger	Cheese + Onion Parcels	Quorn Fillet Curry	Vegetable Fingers
<b>On the Side</b>	Spring Roll & Prawn Crackers	Curly Fries & Corn on The Cob	Homemade Wedges & Beans	Rice & Peas	Crispy Cubes & Beans
<b>Lighter Bite</b>	Tuna Mayo Baguette	Jacket Potato With Beans	Cheese Baguette	Jacket Potato with Tuna Mayo	Ham Baguette
<b>For Dessert</b>	Pan Cakes	Choco Rice Cake	Strawberry Jelly	Flap Jack	Ice Lolly



**New  
Venue**



The MegaCentre  
Community Space  
Joy Family Life  
Peace Love Youth

# Free SEND Coffee Morning @ The Community Space

*with parenting support sessions*



**with guests from**

**A SEND Inclusion Partner & A SEND Engagement Facilitator**

**Thursday 14<sup>th</sup> May 2026 - 10am-11.30am**

## **Topics will include**

**Transition to  
secondary school**

**Choosing the  
right school**

**Differences of  
secondary schools**

**Supporting your child**

**Key questions to ask**

**Free to attend and no need to book**

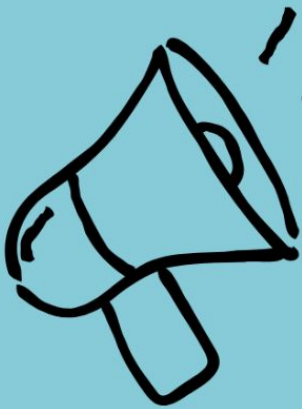
for more info contact  
[families@megacentrerayleigh.co.uk](mailto:families@megacentrerayleigh.co.uk)

**78 EASTWOOD ROAD RAYLEIGH SS6 7JP**



**ARE YOU A PARENT OR  
CARER OF A CHILD OR  
YOUNG PERSON?  
SHARE YOUR VIEWS IN  
OUR PARENT SURVEY!**

Essex County Council  
would like to hear how  
you find out about  
local family services.



Tell us how you feel via the parent  
survey for the chance to **win a £100  
shopping voucher**. Your views could  
help shape services for local families.

Scan the QR code to fill in the survey or  
follow the weblink here:  
[surveymonkey.com/r/EssexParentsSurvey](https://surveymonkey.com/r/EssexParentsSurvey)



Commissioned by

**coram**  
Family and Childcare



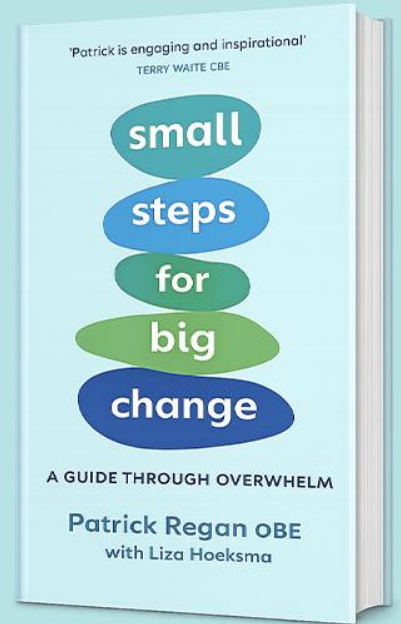
Essex County Council

# Overwhelm Tour

## 12th May

## Rayleigh

**Megacentre Rayleigh**  
**SS6 7UT | 7:30pm**



Join Patrick Regan OBE and Singer/Songwriter Caitlyn Kelly for an evening of humour, interviews, Live music, and inspiration. The Overwhelm Tour is packed full of practical tips for wellbeing, alongside stories of struggle and strength. Hear from local agencies making a difference in your area.

This evening is for all of us who want tools to invest in our emotional, mental, physical, and spiritual health so we can look forward to a healthier and more hopeful future.

**Book  
Now**



Live music from  
Caitlyn Kelly

